

THE FAMILYHOODTM HANDBOOK

THE ADVENTURES OF HOTETM

IN SEARCH OF
OF MAAT, I FOUND
FAMILYHOOD!

WRITTEN BY
DAVID N. ROACH

"PEACE IN SELF, IS WHERE PEACE BEGINS."

SM

THE FAMILYHOOD HANDBOOK

Written by David N. Roach

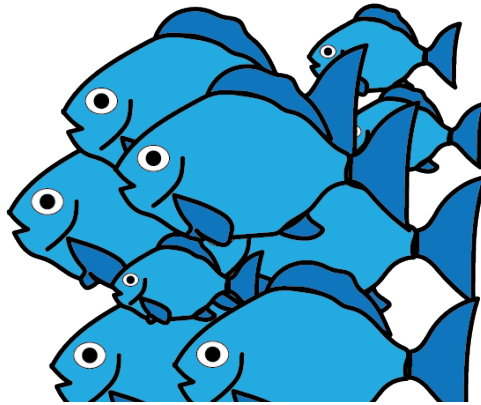
TABLE OF CONTENTS

- 2) Table of Contents
- 3) Be Like the School of Fish
- 4) The New Image OF a School
- 5) the Community Leadership Pipeline
- 6) Speech from a Returning Alumni
- 7) Speech from a Returning Alumni (continued)
- 8) Speech from a Returning Alumni (continued)
- 9) 1st Saturdays Flyer
- 10) Why Familyhood is a Systemic Approach
- 11) The Role of The Familyhood School
- 12) Familyhood and drop -outs The Friends of School
- 13) Why is Familyhood a 20 year year plan?
- 14) The Familyhood / School Library
- 15) The Friends of School
- 16) Familyhood Defined - One Sheeter
- 17) Familyhood Summit Flyer
- 18) Solutions to Problems 1 & 2
- 19) Solutions to Problems 3 & 4
- 20) Solutions to Problems 5 & 6
- 21) Solutions to Problems 7 & 8
- 22) Solutions to Problems 9 / Contact Us
- 23) About the Familyhood Handbook
- 24) Spread Peace Wear Hotep

©2022 The Adventures of Hotep

Created by David N. Roach
All Rights Reserved

Be Like The School of Fish



What does the word “school” mean?

Here on land, when we think of a school, we think of a place, a physical building, where students, teachers, meet from 8:30 am -3:00 p.m, five days a week, nine months out of a year.

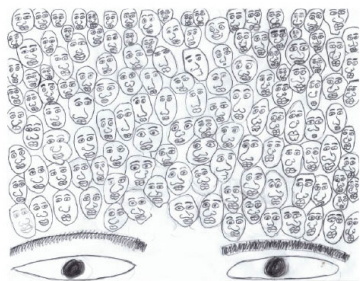
When we think of a “school of fish,” we envision a group of fish swimming together in our deep waters in unison. Not a physical place, but the actual fish make up what we call “the school.”

The vision of a Familyhood School is closer to the school of fish.

Like fish make up the school of fish in our waters, actual students, parents, alumni, and community partners, make up the school collaboration we call Familyhood.

Hotep

The New Image of a School



Familyhood promotes a new image of a school. Not a building full of classrooms and hallways, etc, but rather an image full of faces. The faces represent all the people

apart of the school. One of the goals of Familyhood is to make this image as large as possible. Meaning, as the school grows with more faces, the school grows with more intelligence and is able to better serve the school and its surrounding community.

Like a fisherman that uses a loose net to catch fish in the sea, Familyhood creates four nets to not only capture the fish (faces) but places each fish (face) within the appropriate organization to govern itself. These four nets 1) The Student Government Association, Parent Teacher Association, Alumni Association and Friends of School. Every face, in the image of faces, falls into one of these four organizations. The collaboration of these organizations is the schools Familyhood.

This image of faces promotes “people” as the means of production for a community’s development. Students who enter schools each year are the inputs. The students who graduate from the schools are its outputs. Like gasoline used to power an automobile, the freshmen class along with the student body are the inputs that power a school. Familyhood is a loose net that captures and retains graduates by transitioning the former students into their Alumni – Association.

A Familyhood school’s goal is to stay connected to their student for the life of every student Four years as a student and the rest as an Alumni. For example, lets hypothetically create a student who graduated from high school at the age of 18 and lived to be 100. from the age of 18 to 100 years the student could have been an Alumni for 82 years. This four years of teaching a student and receiving 82 years of service, in return, is a primary goal of Familyhood.

Familyhood directs all students, as early as possible, to enter the pipeline of governance, by joining the school’s Student Government Association and continuing through the pipeline of governance to become Alumni for the rest of their life. The more Alumni the community produces, the more developed the community becomes.

The physical location of a school, the building image of school should not be overlooked and/ or under-valued. With the Familyhood goal to serve the individual for a lifetime, the physical school can now expand the hours of operation, open-up its classrooms, its auditoriums, its cafeteria’s, its football fields, its swimming pools, its internet connection, its computer labs, its gardens, etc, to better serve the community and its constituents.

The first motto of familyhood state’s 1) Every school shall have a functioning Student Government Association, Parent Teacher Association, Alumni- Association.” By having these organizations functioning, along with “Friends of the school (community partners/ everyone else), the school’s Familyhood can retain its population to better serve the school and its community. Hence, the faces increase as the school’s alumni continues to grow.

Familyhood defines Alumni as graduates who are members of the school’s Alumni Association with the added role, as an organization, to mentor the Student Government Association.

The Familyhood pipeline is built one month at a time through 1st Saturdays (the official monthly volunteer day each month) with a goal of creating a communication pipeline directly between the Student Government Association and its Alumni - Association that enables students hands-on leadership / work experience and mentorship from Alumni.



Community Leadership Pipeline



*Applies to all grade levels, i.e., Elementary school, Middle School, High School , College.

The communication to and from the Student Government Associations and the Alumni Associations are the communities Thread of leadership according to Familyhood. To illustrate the thread of the communities clearer, let's look at the pipeline of governance according to familyhood (graph above). The pipeline begins with students joining a school's Student Government Association and graduating into the school's Alumni Association. Alumni, according to Familyhood are graduates who become members of the school's Alumni Association with the additional role of returning to the school in service, i.e. mentor, volunteer,

To illustrate this "thread of leadership further, I will create a hypothetical character who experienced this Thread of Leadership in the community. Let's call this person , "Winter."

Winter was born in 1965. Winter grew up in West Oakland. Winter attended the same school's his parents attended. Winter attended Hoover Elementary School, Lowell Middle School and McClymonds High School and Clark AU in Atlanta, GA.

If Familyhood were functioning during Winter's educational journey above, how would Winter describe his educational background?

Let's start with Winter graduating from McClymonds High School in 1983. He joined the Alumni Association as soon as he walked off the stage and has been an Alumni ever since - a total of 39 years. Which means McClymond's served Winter for 4 years as a student and has reaped the benefit of Winter's support for the next 39 years and still ticking.

Winter graduated from Lowell Middle School in 1979 and joined Lowell's Alumni Association right after leaving the stage. And, similar to being a McClymonds High School Alumni Association, Winter has been a Lowell Alumni ever since graduating from Laurel, now 43 years. Winter graduated from Hoover Elementary School in 1975 and has now been an active member of the Hoover Elementary School Alumni Alumni Association for 47 years.

Winter was very active in the Student Government Association at Hoover Elementary School. Winter was elected treasurer of The Student Government Association one year and class president as a 5th grader. Winter experienced first-hand Hoover Elementary School's Alumni Association mentoring their Student Government Association. Most of the Alumni of Hoover Elementary School, were now student government leaders at Lowell Middle School (which meant recent graduates). These recent graduates were excited to share the progress they made as once students at Hoover Elementary School and to share how things are for them at Lowell Middle School, including being mentored by Lowell Alumni Association students (many who are students at McClymonds High School).

The above journey of Winter's student government experience and alumni experience at all the grade levels above, seeks to show how a seed is planted early in the students to one day graduate and to return as an Alumni in service. It also seeks to show how a thread of leadership with the schools systems of government functioning , enables all students the opportunity of leadership within their own community.

The Speech from a returning Familyhood Alumni (hypothetically speaking continued)



The Speech from a returning Familyhood Alumni (hypothetically speaking)

Dear Family and Friends,

It's so good to see so many familiar faces.
My mother is here, please raise your hand mom.
My Familyhood Journey began with my mom joining my elementary school's Parent Teacher Association and making sure I was an active member of the Student Government Association at Frederick Douglass Elementary school.
I ran for Treasurer and won at the age of 7.
I recall every 1st Saturday of the month attending volunteer days with my father, who was Treasurer of The Frederick Douglass Elementary School's Alumni Association.
So, imagine my life. My mother PTA and my father Alumni -Association and my uncle Kenny being in the Friends of School organization of the school.
Uncle Kenny lived in the community and operated an advertising firm within the neighborhood that hired a number of students over the years.
When you look at me standing here, understand, they are here too.
When I graduated from Frederick Douglass Elementary School, I immediately joined the Frederick Douglass Alumni Association.
I wanted to return the support I was given as a student leader from the Alumni Association.
I couldn't wait to hear how the students had progressed since my time there as a student, so I attended my old schools 1st Saturdays volunteer days.

For example, during my era, we started the garden and the farmers market.

Within the next two years, they, the Student Government Association had secured funding to launch the grocery store. They were most proud of their grocery store being a location to sell produce grown by African-American farmers and other local farmers. They also raise starters in the garden, save seeds from the garden.

My hardest task besides my general studies in middle school during those days was balancing or letting go of the Familyhood activities at Frederick Douglass Elementary school and becoming more involved with the the Ida B. Wells Middle School Familyhood activities. For example, at first I would start off my 1st Saturdays at Frederick Douglass and leave about half way through and finish the rest of the day at Ida B. Wells 1st Saturdays. Fortunately, the bike ride was less than a five minute ride.

About my third year in middle school, my 7th grade year, I ran for treasurer again and won again. Most of the Alumni- Association mentors from our Student Government Association were from McClymond's High School, which is of course where I attended and where we are here today.

Some of you might recall, I was class president here at McClymonds High School each of my years. What you may not know is along with Mr., Hamilton, Mr. Purdue, every Tuesday, I opened our grocery store each morning at 6:30 a.m.

That was my Junior and Senior year. Mr Scott would come with his produce every Tuesday. Every Thursday, Mr. Rodriguez Farms would come with theirs.

We had a routine of checking in with each other every morning. It started around the the coffee pot. Since we sold the major newspaper/ publications Mr. Purdue would take it upon himself to read out the headline stories.

A few years later, the store opened and has continued to grow in size and staff over the years.

The Speech from a returning Familyhood Alumni (hypothetically speaking continued)

I recall reconnecting with my old schools during the Familyhood Virtual Summit - which happens twice a year for schools Student Government Association's, Parent Teacher Associations and Alumni Associations. Around the world, orgs and others share the best practices of governing on schools. Schools share their school -based enterprises, the garden, farmers market. Some schools are growing using Geological Agriculture -the ability to grow food in rocks stead of soil. We now sell these starters in our stores and other locations throughout the city.

Through The Familyhood Connection, we are connecting with schools around the world to create healthy, sustainable communities from the schools up.

Others are replicating some of our work around the world. We are growing more food in our homes, community centers, auditoriums, feeding people and creating jobs through our school-based food -related enterprises and reducing hunger right in our neighborhoods because of these food related enterprises.

And because of the sustainability we are able to accomplish ourselves, we have added another option in the minds of our young people that great opportunities are right in your community.

So if asked, where does one want to work? Where does one want to seek new opportunities?

The answer: my community is now an option. Since, I have been Familyhood siince the age of 7, I feel like I have been trained to improve my community from the very beginning, I was reminded that one day I would be mentoring students like myself as an Alumni. I remember thinking, "what could be better than being an adult and playing all day ?" I mean mentoring Student Government Associations?

I graduated and went away to college, a Historical Black College, Clark -Atlanta University in Atlanta, Georgia. I still stayed connected to the Alumni -Association and the school -based enterprises.

During my first year at Clark AU, I realized, my experience was rare. I even met a few students that said, "they had never heard of Familyhood." I personally witnessed schools with no school gardens. I thought about the many students who learned how to grow food in our school gardens. I took for granted what I knew, what to grow and when to grow it. What was in season? What contained the most vitamins and minerals. I realized my experience, my Familyhood journey was rare and I wanted every child to experience it.

**SPREAD PEACE,
WEAR HOTEPI!**



[HTTP://ADVENTURESIOFHOTEPE.COM/STORE](http://adventuressiofhotepe.com/store)

The Speech from a returning Familyhood Alumni (hypothetically speaking)

We wanted to know why some students did not graduate on time. Some became parents while in school and dropped out. Some had housing issues. Some had been incarcerated. Some had special learning needs that were needed to be addressed. Some suffered health issues that prevented them from being within the school's schedule to graduate on time.

We also wanted to know the options for adult classes, etc, to enable them to receive their diploma and become college/ career ready.

Since too many students are not graduating on time and sometimes years go by, that it appears, they have accepted not finishing high school as their life, we knew, we could improve upon the options currently being offered outside of this school, by extending the hours at the school and bringing these options within our school.

We extended the hours of our school for these students. Our graduation rates, continue to increase. Many of them have joined the Alumni Association because they attribute their success to the Alumni and Student leaders who assisted them.

O.k. I am getting the knob to finish up. Let me best summarize my Familyhood journey. In elementary school, I learned percentages. We counted the votes and determined what percentage each candidate received. In middle school, the Alumni were more hands-off... I really started to see the power of questions, they asked a lot of questions. They wanted us to be patient with the steps we were taking to advance the school-based enterprises. They asked: where are your farmers? What do they grow? What is the return on investment?

In High School, we asked the questions. We became more comfortable with sharing our visions. All of my schools consisted of all types of nationalities... mostly African- American. Other students were from places like Cambodia, Germany, Thailand, Somoa, Yemen, Mexico, Iran. Some of them became ambassadors of Familyhood to schools back in their mainlands.

When I became a McClymonds High School Alumni Association, I felt a direct responsibility to this community like never before.

All the Alumni who guided me in elementary school, middle school, high school, flashed before me. I was now at the "high school" - the highest in this neighborhood. I automatically, transitioned from child to adult.

I am now a proud Alumni of Frederick Douglass Elementary school, Ida B.Wells Middle School, McClymonds High School and Clark -Atlanta University.

I am honored to be here today speaking about my personal journey towards Familyhood in this community.

After some 20 plus years, I believe the inter-generational thread of Familyhood is firmly in place to increase sustainability from within the community by and for the people in the community.

As long as these organizations continue to function and check in with each other once a month through 1st Saturday, the vision of increasing collaboration between the school and its community becomes a month closer to reality.

Thank you for allowing me to be here today! I hope to see you on May the 14th at the Familyhood Virtual Summit !

the end of speech

1ST SATURDAYS™

The Official Monthly Volunteer Day at Schools



photographed by Keba Konte

**“1st Saturdays is ...the “Do Now
” strategy towards Familyhood”**

START • JOIN • GROW

LEARN MORE:

1STSATURDAYS.COM

A Systemic Approach to Building a School and its Community

Before I explain why Familyhood is a systemic approach to community development, let me define what I mean by “systemic”.

Like a transportation system of a city may consist of freeways, airports, ports, rail, the process or mechanism one must have to utilize these roads, bridges, rails, etc., are all apart of the transportation system.

For example, if you have a car, with insurance and up to-date registration, one has the rights and privileges to drive on roads, freeways, etc. If one wishes to travel by train from Oakland to Los Angeles, a rail company, requires each passenger to purchase a ticket, enabling the passenger to sit on a train and transported by rail from Oakland, CA to Los Angeles, CA.

Now, let's create hypothetical character. Let's call this character Summer. Summer lives in Berkeley. Summer wants to visit Los Angeles, CA. What is a systemic approach Summer can take to travel to Los Angeles from Berkeley, CA?

Summer could drive a car to the Oakland Airport and fly to Los Angeles. Summer could drive to Emeryville and take a train to Los Angeles. Summer could drive from Berkeley to Los Angeles. These are all systemic approaches Summer could use to travel from Berkeley to Los Angeles, CA.

Similar to the transportation system described above, school districts have a school system that goes from k-12. It's systemic approach has been to advance a student to the next grade level each year when that student completes all the years of that school's grades.

Familyhood expands the schools current “systemic approach” of one grade level at a time, to include, the governance of these four school-based organizations. Thereby, in addition to a student saying, “I am a 10th grader”, a student would say, “I am a Student Government Association member”.

For example, a parent would say, I am member of The Parent Teacher Association. An Alumni, “I am apart of the Alumni Association. And lastly, a community partner would say, “I am apart of the Friends of School”.

Like the roads are available for us to drive our cars, these four organizations functioning enable Familyhood to increase its membership and therefore, its capacity to better serve the school and its surrounding community.

As the transportation system allows “all” people to travel, provided they have a license, etc, as mentioned above, Familyhood promotes “all” people, of all the generations to be involved in growing Familyhood in a school/community.

Remember, Familyhood is a community development vision that believes the more Alumni the schools produce, the more developed the community will become.

Familyhood recommends that each of these four school -based organizations function like non-profit organizations to best administer the needs and wants of their constituents.

These organizations should also collaborate in the planning and operation of motto #2 school-based enterprises, i.e., the school garden, farmers market and grocery store and meet once a month through 1st Saturdays.

These school-based, food related enterprises are the hands-on business training/ work experience opportunities Familyhood's systemic approach of community development helps to establish.

Familyhood's systemic approach takes the entire population of a school, all of a school, it's partners, it's drop-outs, and directs the to their appropriate organization to utilize the school as a resource for its students and its entire community.

The Role of The Familyhood School

Familyhood is a community development vision that defines schools as the hub of the communities development. The means of production for the development of the community is the production of Alumni. Hence, in theory, “the more Alumni the community produces, the more developed the community will become.”

Familyhood defines Alumni as graduates who join the Alumni Association with the added responsibility of mentoring the schools Student Government Association. In action, a major role of the Alumni Association is to promote all students to be apart of the Student Government Association, so well, that in four years, those students will graduate and join The Alumni Association and mentor the next generation of student leaders.

Herein lies the first role of the school (Familyhood School)

1) To see itself as an educational home for life for all its students.

The additional motive/ benefit Familyhood promotes to schools is to: “teach your students well for four years and they will return and volunteer for the rest of their life.” To accomplish this role, the Familyhood School prioritizes having both The Student Government Association and The Alumni Association, always in communication as described by the Communities Leadership Pipeline.

Herein lies the second role of the school (Familyhood School)

2) Establish both a Parent Teacher Association and a Friends of School organization to assist in accomplishing the 1st role above.

All the above organizations, and the Alumni Association are now working together to advance all the students to graduate and to become Alumni.

To really maximize the education at a schools location, Familyhood promotes schools to extend the hours of operation to serve its students and its Alumni by utilizing the Student Government Association and Alumni to work study/ volunteer at the school.

Its a shame to close schools at 3:30 p.m. everyday. Often schools host after-school programs, sporting events, which may last until 10:00 p.m. or so. Schools possess so many resources: computer labs, gymnasiums, auditoriums. Schools should extend their hours according to what the school can program.

In addition to the resources within the school, the Familyhood school is always in search of additional resources to improve the educational experience for its students and their community.

Herein lies the third role of the Familyhood School.

3) Find community partners/ companies/ drop outs, etc to join the schools Friends of School organization.

Some of these community partners or rather “Friends of the School, could employ students, parents, etc. Some could consult the school’s Familyhood to be more affective in its pursuit of building its Familyhood and better serving its community. Some could donate needed equipment and supplies to improve the garden, the farmers market and the grocery store.

The sky is the limit in ways The Friends of School and The Alumni - Association can support the school’s Familyhood.

By The Familyhood school taking the role of establishing these four organization on campus, the space is established to allow the school’s inter-generational population to prosper together.



Familyhood and Drop-Outs

By definition Familyhood is a systemic approach of community development, which defines its means of production as the production of Alumni. The philosophy is, “the more Alumni the community produces, the more the community will develop”.

The goal of the school is to serve the student for their entire life by the student playing two major roles in their life time. The first role is four years as a student. The second role is as an Alumni for the rest of their life.

Familyhood promotes the Alumni- Association of the school the specific task of mentoring the schools Student Government Association and to actively promote, recruit, preserve the Alumni Association to increase its support of the school and its Student Government Association.

Familyhood has four steps it wants every student to take. Step 1: Join your schools Student Government Association. Step 2: Graduate from School. Step 3: Join The school's Alumni Association Step 4: Return to school to mentor/volunteer. In order for Familyhood to work, according to the definition above, “to produce Alumni”, all four steps above would need to happen for the community to become developed.

One of the main benefits of increasing the membership of the Familyhood organizations, i.e. Student Government Association, Parent Teacher Association and Alumni Association, and thereby increasing the schools Familyhood, is to increase the schools capacity to expand the hours of operation at school sites. By expanding the hours of operation, the school can offer night classes to assist drop out students in completing their education.

Typically schools here in Oakland close at 3:30 p.m. Some after school programs end around 5:30 p.m. Some schools have sporting events that end around 9:00 p.m - 10:00 p.m. Some schools host plays and special events in their auditoriums. I mention these activities to illustrate the type of amenities school possess everyday, but rarely use because school ends at 3:30 p.m.

Familyhood's administration can identify key venues throughout the school and administer them for use by the school/ community. To list a few: The computer lab, the auditorium, the gym, the swimming pool, woodshop class, the school garden.

Imagine one representative from each the Student Government Association, Parent Teacher Association and Alumni Association, rotating, to facilitate all the above rooms for classes, events, performances, etc, to close at 12:00 p.m., seven days a week.

As stated, Familyhood is a community development vision that defines schools as the center of the communities development. The Familyhood school attempts to open its door as long as possible to serve the students, especially students who may not complete their education in the standard four years of time, schools require.

Many of our children face life challenges we would not imagine.

A person can learn at any time of the day.

Why is Familyhood a 20 year plan?

To understand why Familyhood is a 20 year plan, one must first understand the Community Thread of Leadership which connects all the lower- grade levels of Student Government Association of schools in a city/ community to the higher- grade levels of Student Government Associations. By having the responsibility of receiving updates/ minutes from each other. i.e the High -School Student Government Association has the responsibility to receive the minutes / updates from the middle -school Student Government Association and the middle- schools have the responsibility for the minutes of the elementary -schools, the collection of these reports gives a perspective of the community Familyhood calls the Community thread of leadership.

From all the Student Governments, the Community Thread of Leadership promotes Alumni Associations of each grade levels, (i.e elementary schools, middle schools, etc) to mentor The Student Government Associations and also thereby also assisting the Student Government Association in preparing the reports/ updates that will be reviewed by the upper- grade level Student Government Associations as mentioned above.

Assuming a city/community has the Community Thread of Leadership in place and has started hosting 1stSaturday monthly volunteer days, and has representatives from each of its four organizations: 1) Student Government Association, 2) Parent Teacher Association, 3) Alumni Association and 4) Friends of the school in place, the stop-clock of 20 years, to increase sustainability from within the school and its surrounding community can officially begin

Before we start the “stop-watch” of 20 years, I want to remind you that the main goal of Familyhood is to produce Alumni. The means of production for the communities development strategy of Familyhood is to produce Alumni.

Familyhood believes “the more Alumni the community produces, the more developed the community will become.” I also want reiterate the two driving mottos of Familyhood are: 1) “Every school shall have a functioning Student Government Association, Parent Teacher Association and Alumni Association” and 2) “Every school shall have a garden, a farmers market and a grocery store.”

Familyhood seeks to improve the communities economy, by enabling students hands-on experience in these school -based enterprises, while increasing access to fruits and vegetables for the school and its surrounding community.

Familyhood believes schools, especially in lower-income, food desert neighborhoods, must take an economic position that utilizes the physical school and its attributes, to serve the inter-generational market of participants connected to the school. The economic stance is necessary if schools/ community’s seek to lift itself out of the poverty /low-income communities.

Familyhood’s 20 year vision encompasses a schools ability to grow in membership (each of the four organizations grow in membership, thereby enabling the school’s Familyhood, to have the capacity to plan and operate the school -based enterprises.

After operating these school-based enterprises for 10 years, The school-based enterprises should be at least breaking -even, financially.

By 20 years, The schools Familyhood should be completely self - sufficient. The schools Familyhood is now able to fund its administration to grow its Familyhood and its school-based enterprises.

Familyhood's School Library

As 1st Saturdays is a monthly reminder to pick up where Familyhood left off the previous 1st Saturday of the month, the library is the source, the daily place, like a museum, to research the status of Familyhood.

In short the Library is the official record keeper of "The Community Leadership Thread". The library collects and preserves the membership information for the Familyhood organizations, i.e., The Student Government Association, Parent Teacher Association, The Alumni Association and Friends of The School.

For example, each year The Student Government Association's elected officials take pictures. These pictures would be showcased in the library. The library would dedicate space to serve the student body. i.e., students could find internships, jobs, training, scholarships and learn of other opportunities in the community.

Like the school of fish, the Library is the center of Familyhood's inter-generational governance in action. In addition to being a place where students, parents and Alumni can come and locate resources, Familyhood is actively in pursuit of building Familyhood right now by promoting 1st Saturdays and the other School-based enterprises, as mentioned earlier.

As I mentioned earlier, every school is different and therefore, every Familyhood will be different. For example, while several schools may create an annual calendar and save all the 1st Saturdays dates to volunteer, as Familyhood recommends, the success of the actual 1st Saturdays event will be greater if participants are actively recruited to promote 1st Saturdays each and every month.

1st Saturdays, monthly volunteer/ recruitment day is a monthly event Familyhood plans from the library.

Familyhood is driven by two motto's: 1) every school shall have a functioning Student Government Association, Parent Teacher Association and Alumni Association and 2) Every school shall have a garden, a farmers market and a grocery store.

The library would feature the latest information about these school -based enterprises. For example, the actual "business plan," for these enterprises would be featured in the library.

Documenting the pursuit or journey of a schools Familyhood and having this information available in the library, helps to strengthen the cultural thread of the community needed to grow and preserve Familyhood.

To achieve this, The library actively designs and redesigns itself to connect the schools most distant past, to the schools current events/visions.

For the students, the library will plant a seed in their minds that one day, their names will be listed in the library. What will it say about what they did? for example, did their grocery store grow in sales? Did they add more local farmers to provide food at their farmers market? Did their Student Government recruit 100% of the Student Body? Were they the first class to grow food indoors? Were they the first class to feed the homeless? These questions and more are used to steer Familyhood in the direction of service to its inter-generational population and the community they all share.

The Friends of Schools



What about people who did not graduate or attend the schools in their community? How can they get involved? The answer is: “The Friends of School’s” organization.

The Friends of School main role is to promote Familyhood’s two guiding motto’s. 1) Every school shall have a functioning Student Government Association, Parent Teacher Association and Alumni Association. 2) Every school shall have a garden, a farmers market and a grocery store.

The Friends of the School promotes the schools Familyhood by participating in the school’s 1st Saturdays, monthly volunteer day activities which will help a company navigate its best approach of supporting a school and its community. Generally speaking, Familyhood recommends local companies to utilize Familyhood and its 1st Saturdays, monthly volunteer/recruitment day to recruit students/parents/alumni for internships and jobs.

Familyhood recommends The Friends of School to host a booth space at the schools 1st Saturday each month to share/ showcase resources and employment opportunities.

All school districts typically require background checks, finger prints, TB tests, etc, of all volunteers to increase the protection of students. “Friend’s of School” enables adults i.e. parents/ Alumni /community leaders/ partners to get involved with the overall vision of Familyhood under the supervision of other adults first. Meaning, before, they interact with the students, Familyhood recommends, all adults should be first screened through the “Friends of School”.

Note. All Familyhood’s are different, as every student, every parent and every community is different. Friends of School ‘s will function differently at any school as well. One of the main goals of Friends of School is to recruit “Friends” for its students, parents and alumni, who have resources to assist in their personal development.

#Familyhood **DEFINED**

(Twitter.com/familyhood)

#Familyhood defines the school in any community as the nucleus for community development and orchestrates an intergenerational approach to increasing community sustainability.

#Familyhood is driven by two mottos: **FRIENDS OF SCHOOL** and **MO' BETTER FOOD**.

Friends of school states

“every school shall have a Student Government Association, Parent Teacher Association and Alumni Association.”

Mo Better Food states,

“every school shall have a garden, a farmers market and a grocery store.”

The “do now” strategy to advance schools towards #Familyhood is called #1stSaturdays.

STRATEGY #1stSaturdays

#1stSaturdays represents the 1st Saturday of every month as the official monthly volunteer / recruitment day.

#1stSaturdays promotes volunteers from the schools SGA, PTA (PTSA), ALUMNI and community partners to visit the school one day a month (every 1st Saturday).

#1stSaturdays promotes these three main school based (#Familyhood) organizations to collaborate in managing/operating the schools garden, farmers market and grocery store.

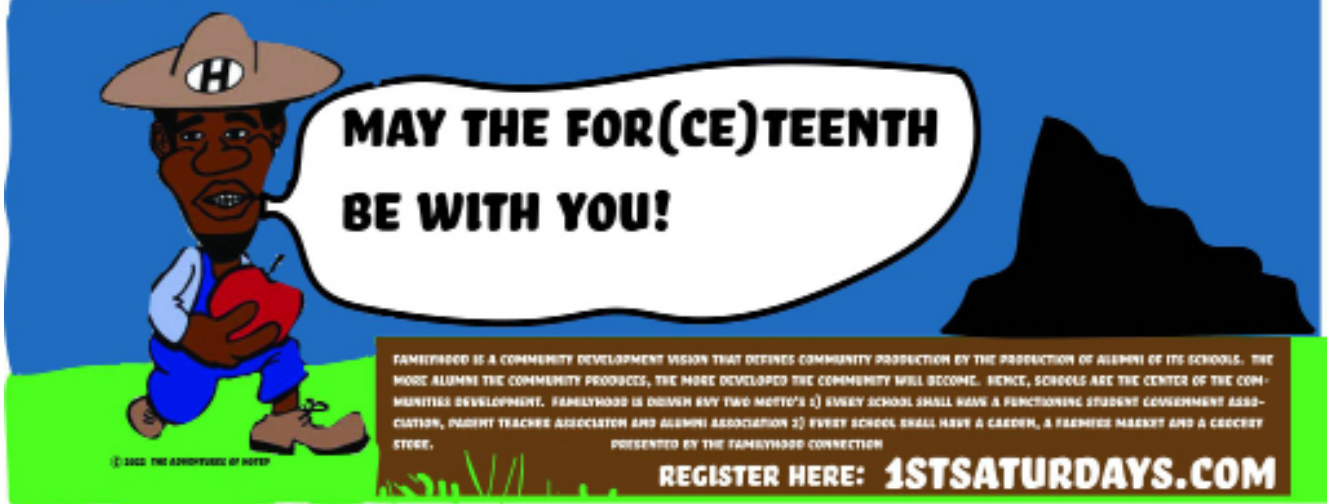
#1stSaturdays gives space to the schools three main organizations by enabling booth space for their organizations to outreach as well as time during the volunteer effort to share updates/announcements in the spirit of recruiting additional members to join their organizations.

The collaboration of the schools SGA, PTA, Alumni (#friends of school motto) is the schools #Familyhood, which starts/manages/operates the schools garden, farmers market and grocery store.

Sign below to show your support in #Familyhood and its 1stSaturdays strategy! Thanks!

Name	Title	Organization	Date
------	-------	--------------	------

THE FAMILYHOOD SUMMIT



SAVE THE DATES:

THE FAMILYHOOD SUMMIT

MAY 3RD AND 4TH 2024

11:00 A.M. - 2:00 P.M.

VIRTUAL

MUST RSVP !

WE ARE CURRENTLY SEEKING REPRESENTATIVES OF SCHOOL-BASED ORGANIZATIONS I.E. STUDENT GOVERNMENT ASSOCIATIONS, PARENT TEACHER ASSOCIATION AND ALUMNI ASSOCIATION AND 'FRIENDS OF SCHOOL (SUPPORTERS)

RSVP AT:

1STSATURDAYS.COM

SPACES LIMITED!

Solutions to Problems 1 & 2

Problem 1

Some have them and some don't

Many schools do not have a working Student Government Association (SGA). This alone, can exacerbate inequities between schools. With SGA's functioning, students are given hands-on experience in leadership and the opportunity to collaborate effectively with their peers to improve their school and their community. All of this is missing when schools do not have functioning SGA's. Also, Parent Teacher Organizations and Alumni Associations contribute to the quality of education students receive.

Hotep's answer to Problem 1:



Motto 1 of Familyhood reads:

"Every school shall have a functioning Student Government Association, Parent Teacher Association and Alumni Association."

"Every school " means not some schools should have these three major school-based organizations function.

We call the collaboration of these three school-based, membership organizations, the school's Familyhood.

1st Saturdays, representing the 1st Saturday of each month to volunteer at the school is also the official monthly "check-in" for the organizations.

If all schools have these organizations functioning Every 1st Saturday's of the month they come together to improve upon where they left off the previous month.

Problem 2

Non-profit is not sustainable

Due to funding cuts, changes in personnel, etc., the current model of non-profit organizations performing various services at schools is not sustainable.

Hotep's answer to Problem 2:



Solution to Problem 2:

Problem: Non-profit is not sustainable

Familyhood's Intergenerational approach supports all organizations working to improve the school. Including outside non-profits. However, it does not rely upon them. Familyhood's main focus is to strengthen its own organizations (SGA, PTA, AA) that represent the people who attend the school each and every day. Meaning, its students, its teachers, its parents, its alumni. With their organizations in place, school programs will have more capacity to be more effective.

Hotep

Hotep

Solutions to Problems 3 & 4

Problem 3

Lack of business opportunities

Many schools, especially in lower income communities lack connections and opportunities in the business community just beyond their gates.

Hotep's answer to Problem 3:



Solution to Problem 3
Lack of business opportunities

Familyhood promotes schools to create another organization: "friends of school," to enable local businesses and community partners to support the school's Familyhood.

The Friends of School organization gives an opportunity for community leaders, partners, not alumni, not students, not parents, to participate in the construction and preservation of the schools Familyhood.

The schools administration and Familyhood are in constant search of local companies to join their Friends of School, to increase internships, jobs, for students/parents, within their own community.

Friends of the school may participate in 1st Saturdays monthly volunteer days and career days at the school, to connect you, parents, alumni to jobs, resources within their community.

Hotep

Problem 4

fruits and vegetables

In many underserved communities, residents lack access to healthy fruits and vegetables.

Hotep's answer to Problem 4:



Motto #2 of Familyhood states:
"Every school shall have a garden, a farmers' market, and grocery store."

All three of these school-based enterprises are hands-on business training enterprises for the students, while they increase access to healthy fruits and vegetables for the school's population and its surrounding community.

With the above food-related, school-based enterprises functioning, every student should learn how to grow food, how to prepare food, and as business participant, develop relationships with their local farmers and businesses within their community.

Familyhood recommends schools to utilize 1st Saturdays - monthly volunteer day to recruit volunteers to help with the garden. After the school's Familyhood grows in membership / capacity, the school's Familyhood begins to plan for the farmers market and as membership/ capacity continues to grow, and additional relationships made with local farmers, artisans, etc, they plan/operate their school-based grocery store.

Hotep

Solutions to Problems 5 & 6

Problem 5

Lack of continuity

Schools lack continuity to effectively carry out long-term goals. When the few students involved in i.e. School - Site Committee (ssc) graduate, they will need to be replaced. Many, very active parents volunteer on school campuses their children attend. Most, also leave when their child graduates. Also, every 2-3 years there are changes in administration at the school -district level. When the new administrator comes in, they start the whole planning process all over again.

Hotep's answer to Problem 5:



Instead of a few students, parents, teachers, meeting on behalf of the school, enable students, parents, alumni who represent the school –based organizations (motto #1) to meet and to share to their constituent's plans/proposals that relate to the long –term goals of the school's development. So that, if an administrator leaves, or a student graduates, the school does not miss a beat of knowing where it plans to go.

Hotep

Problem 6

Not proactive in retainment

Typically, schools do not retain the students they served. Especially in lower income communities, students are taught to graduate and to not return or else in some places.

Hotep's answer to Problem 6:



The seed is planted in the minds of the 15 students that one day, “you will be an Alumni and return to improve all the problems you faced as a student in support of the next generations.”

Familyhood promotes schools to serve their students for the four years so well, that the student will graduate, become an alumni and bring that service and more as mentors for the next generations, as an Alumni member of the Alumni Association.

Hotep

Solutions to Problems 7 & 8

Problem 7

outside will solve the problem

Children, especially in lower income communities are taught their community has many problems. They are also taught the solutions will come from outside of their own community.

Problem 8

Economics and Poverty

Schools typically lack opportunities for students to make money to overcome or lighten financial responsibilities at home.

Many children, especially in lower income communities suffer economic challenges that dictate where they will stay week to week, if they have a change of cloths, food in their stomachs.

Hotep's answer to Problem 7:



Familyhood promotes schools to be the hub of the community's development. Which means all the problems the community faces, should be brought to the school with the intention of solving them. For example, especially. In under-served communities, residents may find it difficult to get on the internet or on a computer to prepare a resume, etc. Could the school expand its hours to enable students/parents access to the schools amenities that typically close at 3:30 p.m.? With several parents and alumni involved, Familyhood believes so.

Hotep

Hotep's answer to Problem 8



Problem: Economics and Poverty
Motto # 2 , "The garden, the farmer's market and the grocery store," are school-based enterprises with a vision to generate income and work experience for students. These food-related enterprises will enable students to grow and sell starter plants at various locations, including their farmer's market. They can sell booth spaces for local farmers/artisans to sell at their farmer's market. After a few years of increased membership in the school organizations, they will have the capacity to operate a grocery store, which can generate more full-time employment opportunities.

Hotep

continue to page 22

Solutions to Problem 9

Continued: Solution to Problem 8

Economics and Poverty

Many children, especially in lower income communities suffer economic challenges that dictate where they will stay week to week, if they have a change of cloths, food in their stomachs.

Schools typically lack opportunities for students to make money to overcome or lighten financial responsibilities at home in their community, while the expectations of the student to preform at the same level as other students who have a place to stay, food in their stomachs, etc.

Familyhood is driven by two motto's: 1) Every school shall have a functioning Student Government Association, Parent Teacher Association and Alumni Association. Motto #2 says: "every school shall have a garden, a farmers market, and a grocery store."

Together, these two motto's say build your governance generations and feed yourself into independence.



Problem 9

School close at 3:30 p.m.

Physical schools, the building and amenities are the most valuable locations in communities, yet the hours to utilize the resources of schools, are very limited, ending at 3:30 (5:30 p.m. if you count the small population involved with after school programs).

Hotep's answer to Problem 9:

In the long-term, Familyhood has a vision of becoming a physical school open for education 24 hours a day, 7 days a week. Meaning the school has individuals on the premises 24/7.

As the Familyhood grows in capacity (increased members in alumni, students, parents) the school is able to offer additional classes in the evening, weekends, etc. utilizing the Familyhood to administer additional classes such as: computer classes in the computer lab, rehearsals for local talent in the auditorium, cooking classes in the cafeteria, yoga classes, woodship classes, the sky is the limit.

Hotep

Question / Comment / Contact /Connect

DROACH@ADVENTURESOFHOTEP.COM
TWITTER: TWITTER.COM/HOTEPSADVENTURE
FACEBOOK.COM/ADVENTURESOFHOTEP



photographed by Sela Roach

ABOUT THE FAMILYHOOD HANDBOOK

Written by **David N. Roach**

The purpose of the Familyhood Handbook is to give a general overview of what the vision of Familyhood is according to David N. Roach, co-founder of The Familyhood Connection inc aka The Adventures of Hotep.

The Familyhood Handbook consists of various articles or frequently asked questions one may have to better understand what Familyhood is. Therefore, if one reads *The Familyhood Handbook* straight through, cover to cover, some of the content will be repeated. Although repeated, usually it is stated in a different way each time, to define the vision I call Familyhood and its “do now” strategy 1st Saturdays.

During this very critical time of school closures and gentrification, a different model for community development that starts and ends with the people in the community controlling their own destiny is the purpose of The Familyhood Handbook.

I am not saying that Familyhood has all the answers to all the problems schools/communities, what I will say is that Familyhood is a systemic approach of developing community, for the community.

The Familyhood Handbook is written as a resource guide for interested parties to work together to empower their school and its surrounding community.

I hope you find The Familyhood Handbook useful in the improvement of your community.

Hotep means Peace!

David N. Roach

Spread Peace!



Wear Hotep!

[HTTP://ADVENTURESOFHOTEP.COM](http://adventuresofhotep.com)